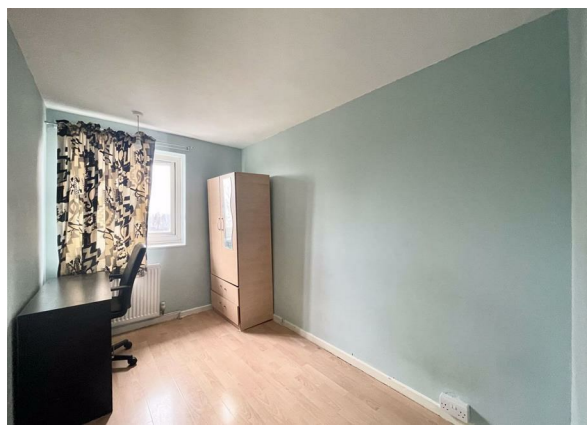
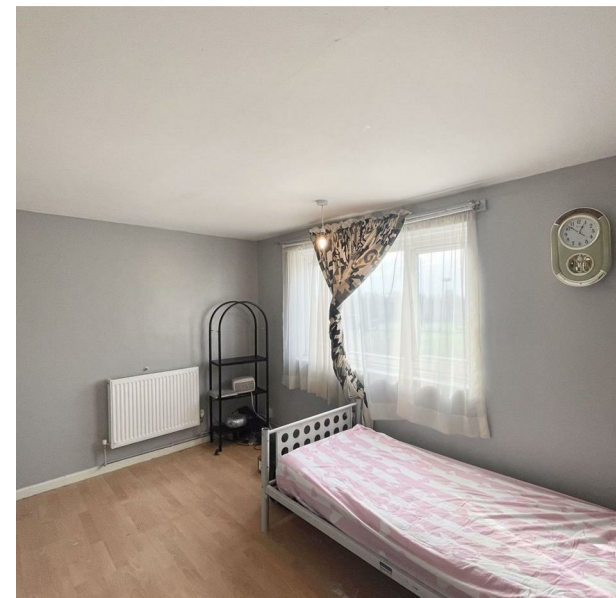


23 Villiers Close, London, Greater London, E10 5HH
£2,000 Per Month

COMPLETION
SALES & LETTINGS



23 Villiers Close, London, Greater London, E10 5HH

£2,000 Per Month

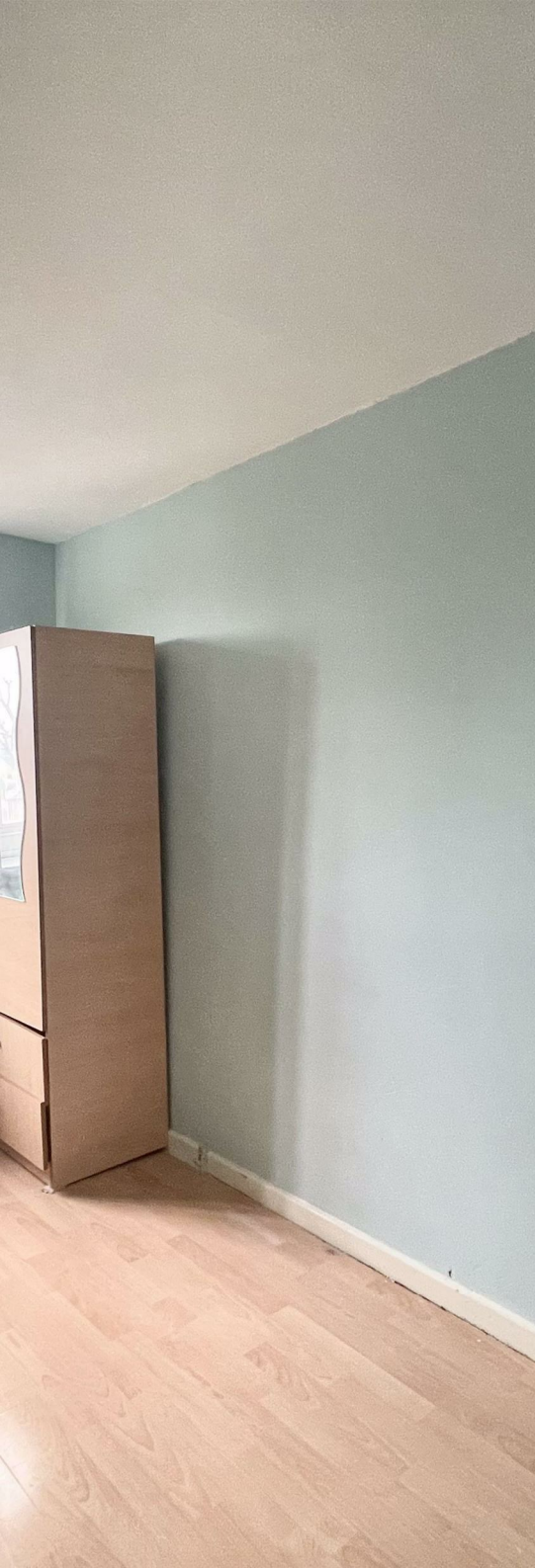
Council Tax Band: B

Nestled in the vibrant area of Leyton, this charming three-bedroom split-level flat is now available to let for £2,000 per calendar month. This property offers a delightful blend of character and modern living, making it an ideal choice for families or professionals seeking a comfortable home.

Upon entering, you will find a spacious reception room that serves as the heart of the flat, perfect for relaxation or entertaining guests. The well-proportioned bedrooms provide ample space for rest and personalisation, ensuring that everyone has their own sanctuary. The flat also features a conveniently located bathroom, designed to cater to the needs of modern living.

The property, being older, boasts unique architectural features that add to its charm and appeal. Its split-level design enhances the sense of space and privacy, allowing for a distinct separation between living and sleeping areas.





337 Forest Road
 London
 E17 5JR
 02085277007
enquiries@completion.co.uk
completion.co.uk

